

F E D E R A L R A I L R O A D A D M I N I S T R A T I O N

Regional Rail Planning

MIPRC Annual Meeting
St. Paul, MN



FRA – Office of Railroad Policy and Development
4/6/2016



Overview

Planning Context

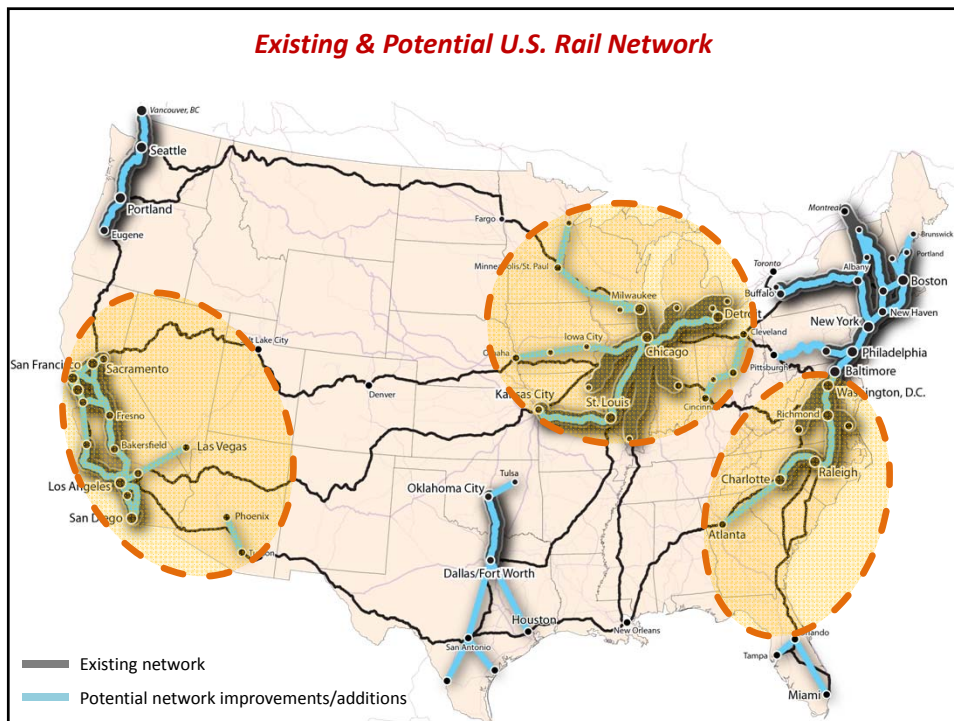
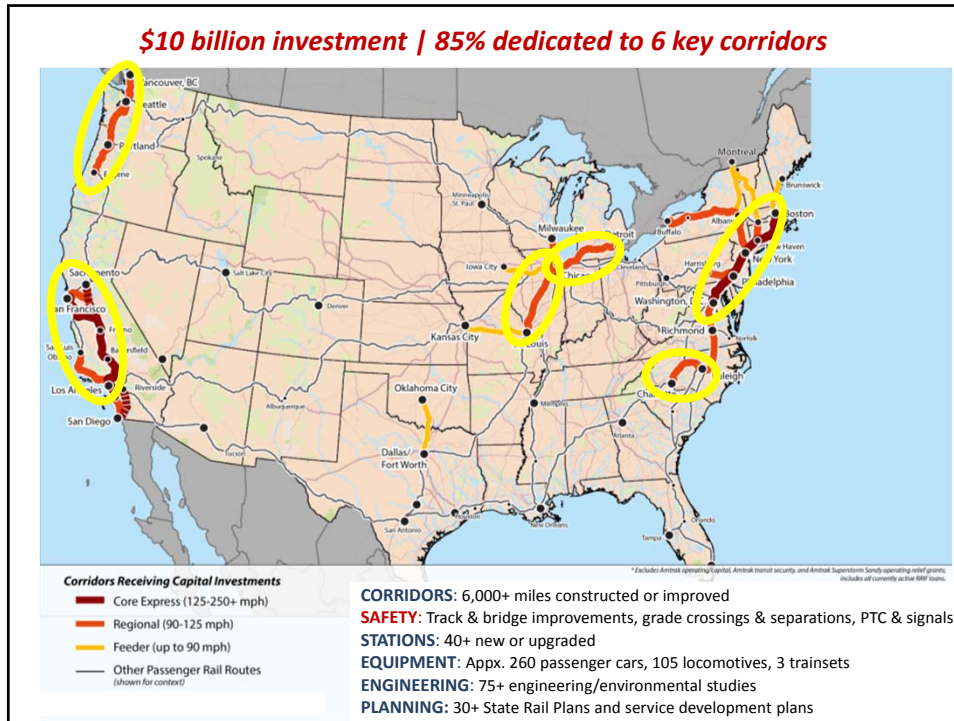
FRA Rail Planning Framework

What is a Regional Rail Plan?

Example: Southwest Study

FRA-led Regional Rail Plans in the Southeast and
Midwest: Next Steps





FRA Rail Planning Framework


National Rail Planning

Regional Rail Plans

Corridor Plans

Project-level Plans

State Rail Plans


5

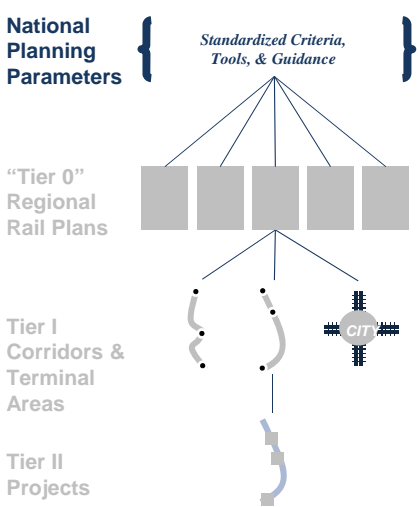
National Rail Planning

National Planning Parameters { *Standardized Criteria, Tools, & Guidance* }

“Tier 0” Regional Rail Plans


Tier I Corridors & Terminal Areas


Tier II Projects



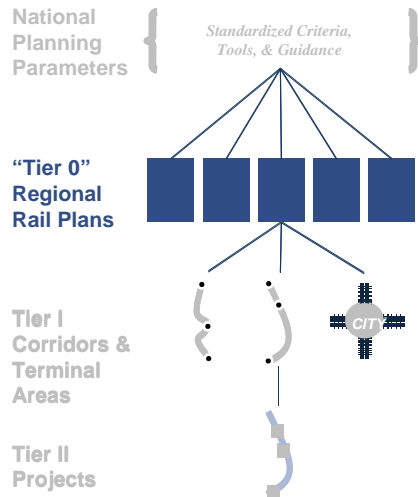
Contents	<ul style="list-style-type: none"> Criteria for federal investment Models, methodologies, & guidance
NEPA	Guidance for project sponsors
FRA Role	Establish investment policies and develop models/guidance

What does the map look like?




6

Regional Planning



U.S. Department of Transportation
Federal Railroad Administration

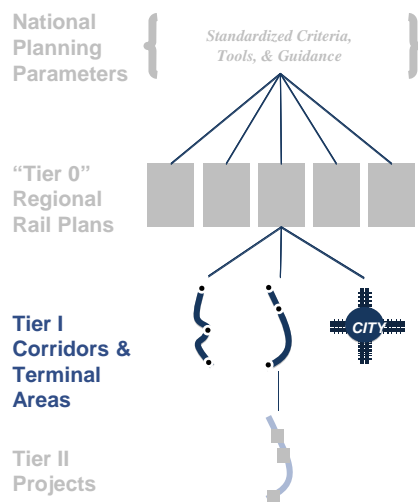
Contents	<ul style="list-style-type: none"> Regional network vision Regional service plan Institutional/financial plans
NEPA	n/a
FRA Role	<ul style="list-style-type: none"> Provide toolkits and best practices Facilitate cross-border institutional relationships Fund projects consistent with adopted regional plans

What does the map look like?



7

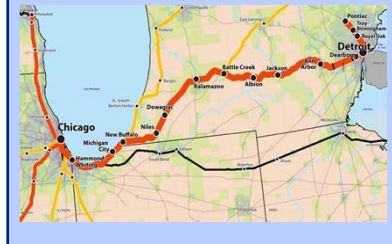
Corridor Planning (Tier I)



U.S. Department of Transportation
Federal Railroad Administration

Contents	<ul style="list-style-type: none"> Corridor alignments Terminal area plans Detailed service plans
NEPA	Service-level (Tier I)
FRA Role	<ul style="list-style-type: none"> Provide service development planning and NEPA guidance Review/approve grant or loan deliverables

What does the map look like?



8

Project-level Planning (Tier II)

National Planning Parameters

Standardized Criteria, Tools, & Guidance

“Tier 0” Regional Rail Plans

Tier I Corridors & Terminal Areas

Tier II Projects

Contents	<ul style="list-style-type: none"> • Project-level engineering • Construction/delivery plans • Project management plans
NEPA	Project-level (Tier II)
FRA Role	<ul style="list-style-type: none"> • Provide project delivery guidance • Review/approve grant or loan deliverables

What does the map look like?



State Rail Plans Within the FRA Planning Framework

National Planning Parameters

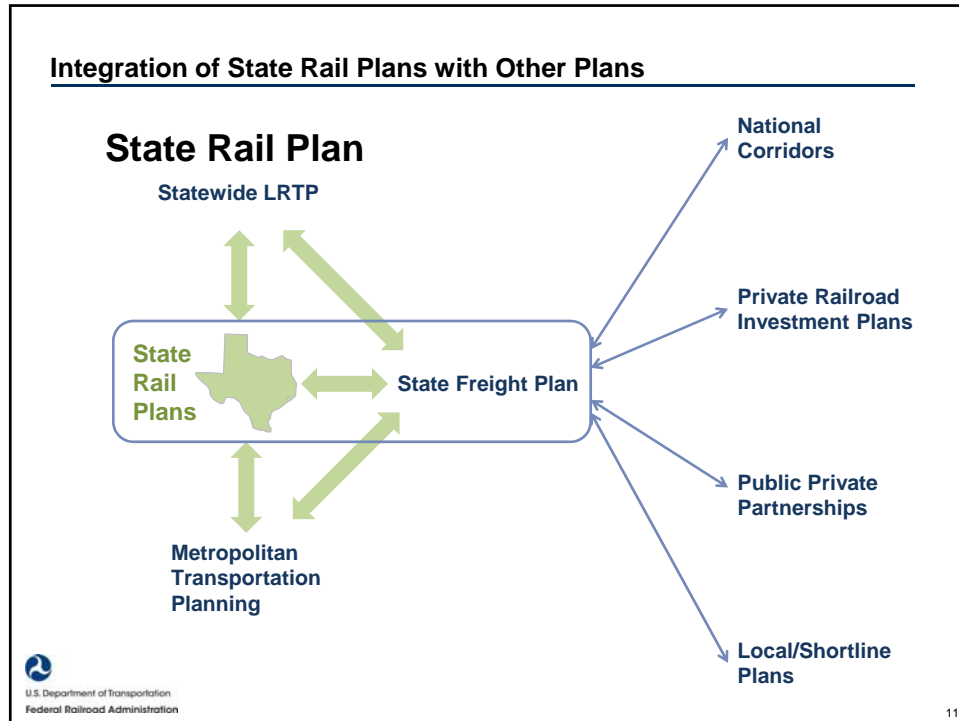
Standardized Criteria, Tools, & Guidance

“Tier 0” Regional Rail Plans

Tier I Corridors & Terminal Areas

Tier II Projects

State Rail Plans



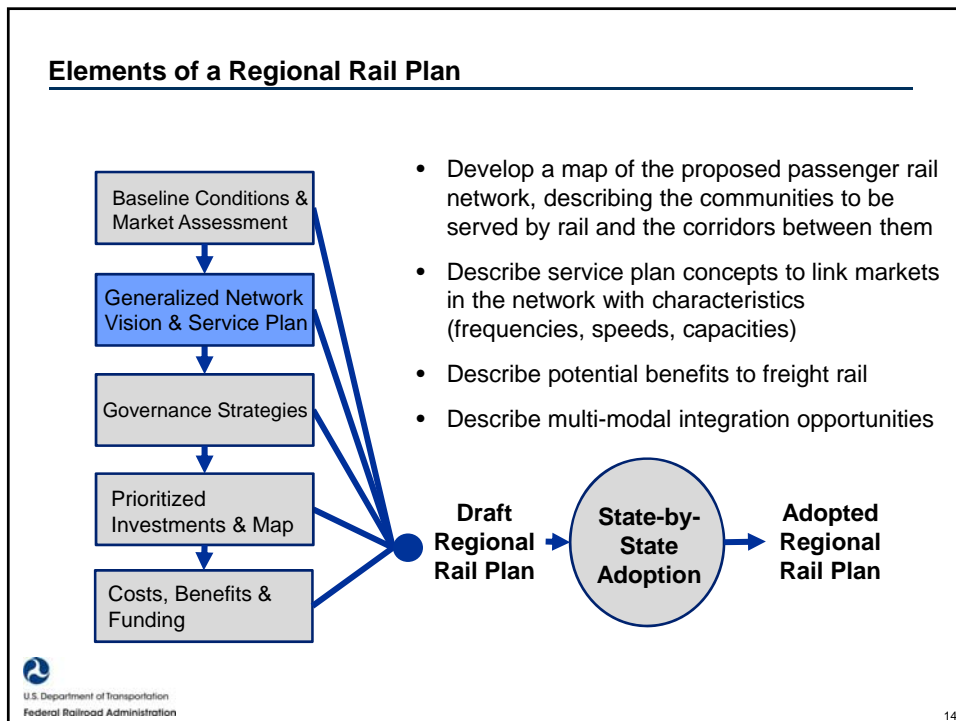
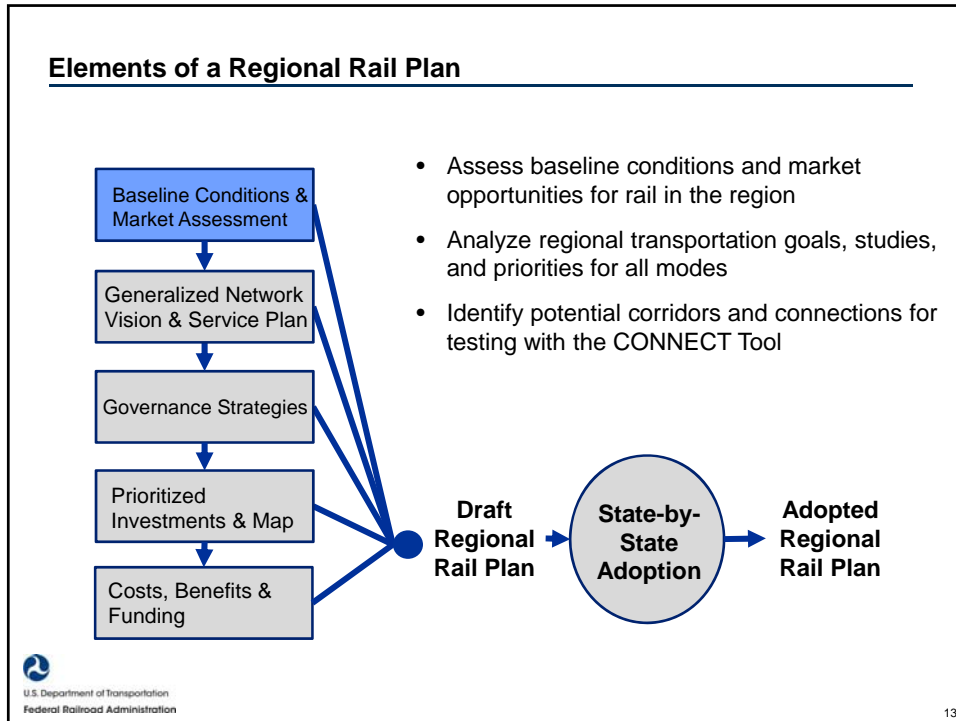
What is a Regional Rail Plan?

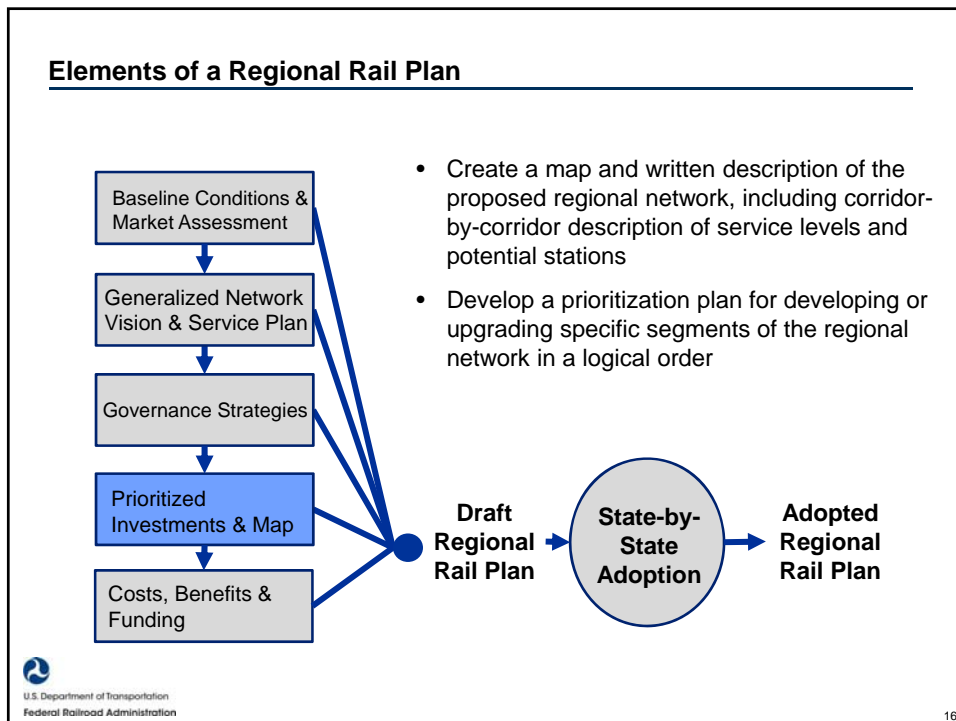
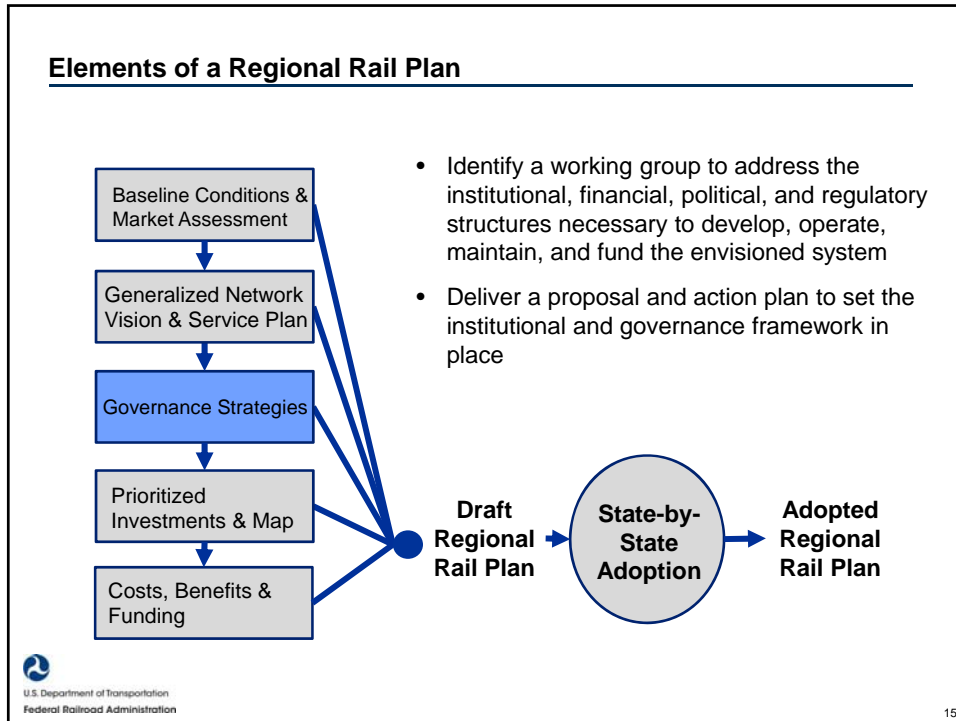
A regional rail plan:

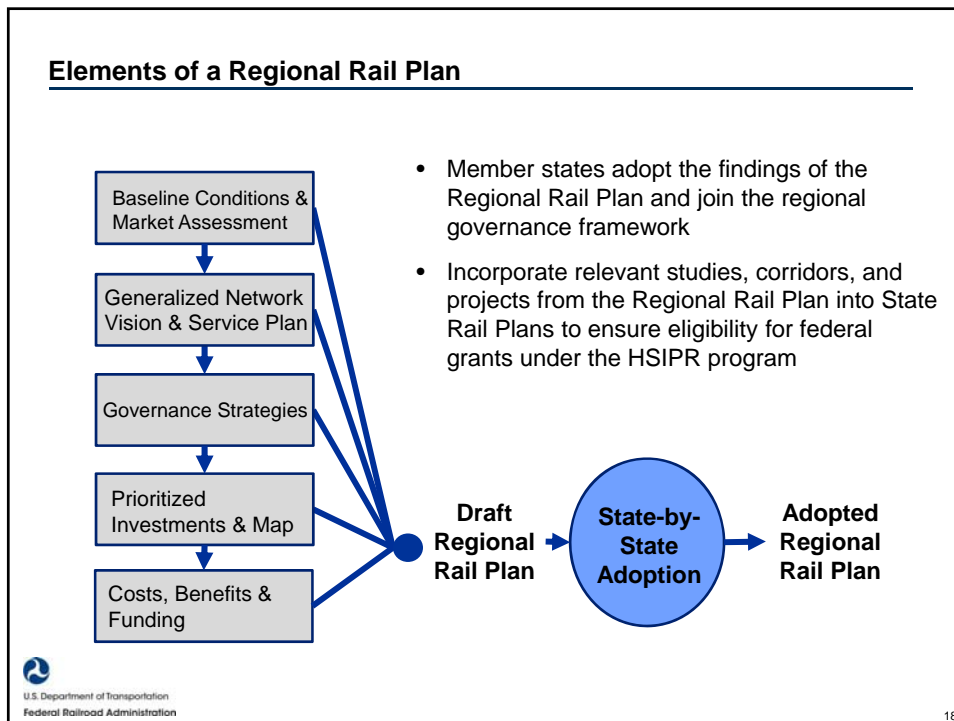
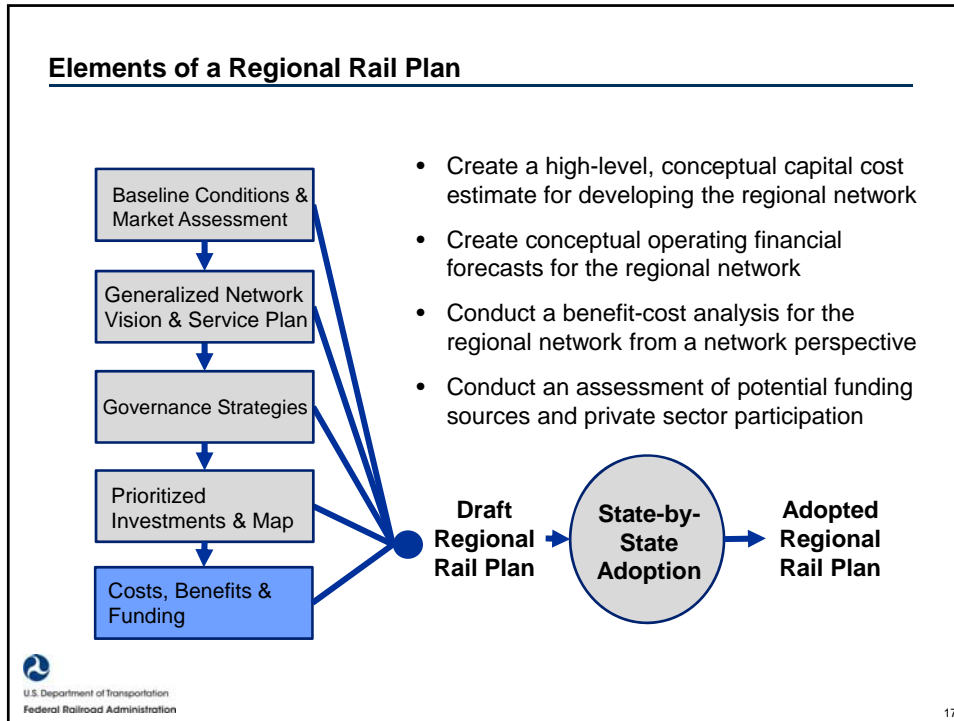
- Is a visioning plan led by the FRA in partnership with regional stakeholders that presents a long-term concept for a high-performance rail network within a megaregion.
- Will help the region and FRA determine the priorities, studies, and investment needs to advance projects within a multi-state network context.
- Illustrates how links with local transit, aviation, highway, and non-motorized modes can create a seamless, integrated transportation system to carry travelers from origin to destination throughout the region.
- Identifies the potential institutional arrangements, financial requirements, phasing, planning and development activities needed to achieve the vision.

U.S. Department of Transportation
Federal Railroad Administration

12







Southwest Multi-State Study

Study Overview


Planning Context


Network Analysis Approach

Preliminary Network Vision

Study Recommendations

Lessons Learned about Process




19

Overview

Study Purpose and Objectives:

- Identify network of “candidate corridors” for further evaluation and planning using CONNECT tool.
- Identify institutional challenges and opportunities related to multi-state rail development and delivery.

More than 60 stakeholders from six states met multiple times over seven months.

**Kick-Off
Conference Call
Oct 24, 2011**

Introduced Study &
Stakeholder Involvement
Process

**Workshop #1
Nov. 2, 2011
Las Vegas, NV**

Identified Potential
Connections
Identified Areas of
Multi-State Coordination

**Workshop #2
Jan. 12, 2012
Los Angeles, CA**

Focused on Topic Areas
1. Transportation Connectivity
& Intermodal Stations
2. Transportation Capacity
3. Institutional & Governance

**Workshop #3
Mar. 15, 2012
Phoenix, AZ**


Provided Input on
Preliminary Results
of SW Network Analysis
Focused on Governance
& Institutional Issues

**Workshop #4
Apr. 19, 2012
Sacramento, CA**

Presented Refined SW
Network Analysis Results
Focused on Developing the
Vision

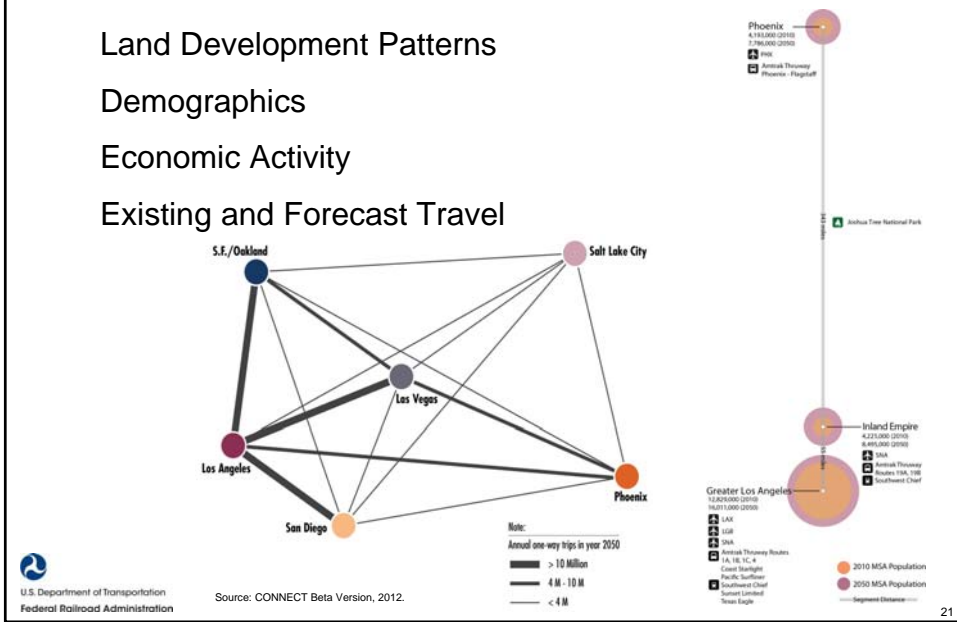
**Workshop #5
May. 15, 2012
Los Angeles, CA**

Provided Input on Study
Report & Recommendations


20

Planning Context

Land Development Patterns
 Demographics
 Economic Activity
 Existing and Forecast Travel

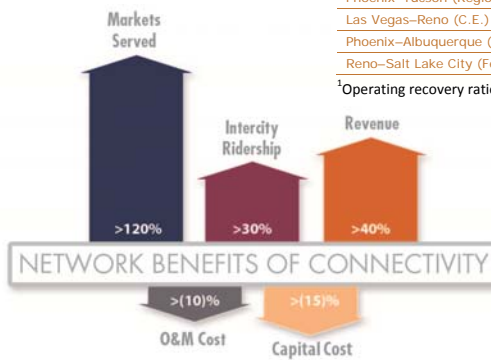


Network Analysis Approach

Table 1 Operating recovery ratio performance

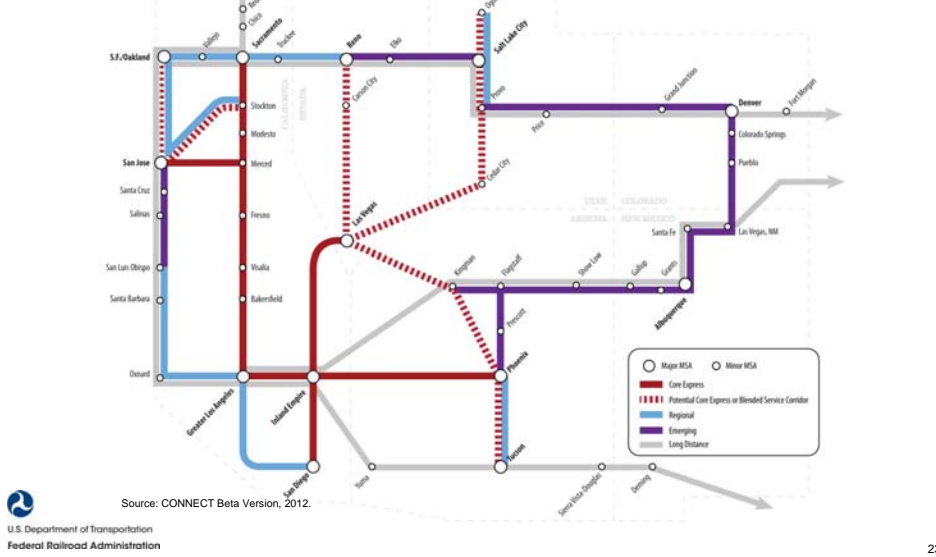
	Stand-alone ¹	Network ¹	Multi-state Corridor
San Diego–San Francisco (C.E.)	●	●	
Las Vegas–Los Angeles (C.E.)	●	●	✓
Los Angeles–Phoenix (C.E.)	●	●	✓
San Diego–Phoenix (C.E.)	●	●	✓
Las Vegas–Phoenix–Tucson (C.E.)	●	●	✓
San Francisco–Reno (Regional)	●	●	✓
Las Vegas–Salt Lake City (C.E.)	●	●	✓
Phoenix–Tucson (Regional)	●	●	
Las Vegas–Reno (C.E.)	●	●	
Phoenix–Albuquerque (Feeder)	●	●	✓
Reno–Salt Lake City (Feeder)	●	●	✓

¹Operating recovery ratio: $X < 1$; $1 < X < 2$; $X > 2$;



Preliminary Network Vision

Rail Network and Service Concepts



Study Recommendations

- Integrate the SW Multi-State Rail Planning Study into existing and ongoing transportation planning efforts
- Establish a SW Rail Working Group to initiate implementation of the Study's governance recommendations
- Convene a voluntary CA-AZ-NV Passenger Rail Policy & Planning Group
- Form a Blue Ribbon Commission to guide a Phoenix-Southern California Corridor Study

Lessons Learned about Process

- Federal involvement is important
- Provide clear definition of study purpose and potential outcomes
- Incorporate other modes into process
- Initiate development of goals and P&N early in multi-state process
- Concentrate stakeholder efforts on in-person workshops
- No one-size-fits-all governance approach

Needs for multi-state coordination

Multi-phase

Ownership
Knowledge sharing

Operations

Marketing and customer service
Service standards
Cost and revenue sharing

Design and Construction

Interoperability standards

Planning

Multi-State Vision
Data for Project Evaluation
Grant Applications
Operating Standards
Safety Standards

FRA-led Regional Rail Planning: Next Steps

- FRA has funding authority provided under the FY14 Omnibus Appropriations Act (Public Law 113-76) to lead two regional rail plans and has selected the Midwest and Southeast for those efforts
- FRA will procure contractors to assist with the planning efforts and to update/improve the CONNECT Tool
- FRA is meeting with regional partners to identify stakeholders and gain feedback about regional needs
- Please share your input!

Thank you!

Questions?

Kyle Gradinger

(202) 493-6191

kyle.gradinger@dot.gov